



Pulse Memorial

Conceptual Design


Workshop

December 12, 2024





Agenda

- ▶ Review where we are in the **Process**
 - ▶ Overview of **Site Options** and Committee **Comments** from Last Session
 - ▶ Present updated **Design Concept**
 - ▶ Receive Committee **Input on Concept**
 - ▶ Next Steps
- 

Design Facilitators



Wayne Dunkelberger
Baker Barrios Architects
Chief Creative Officer
30 YOE



Jay Hood, PLA, ALSA
Catalyst Design Group
Principal Landscape Architect
36 YOE

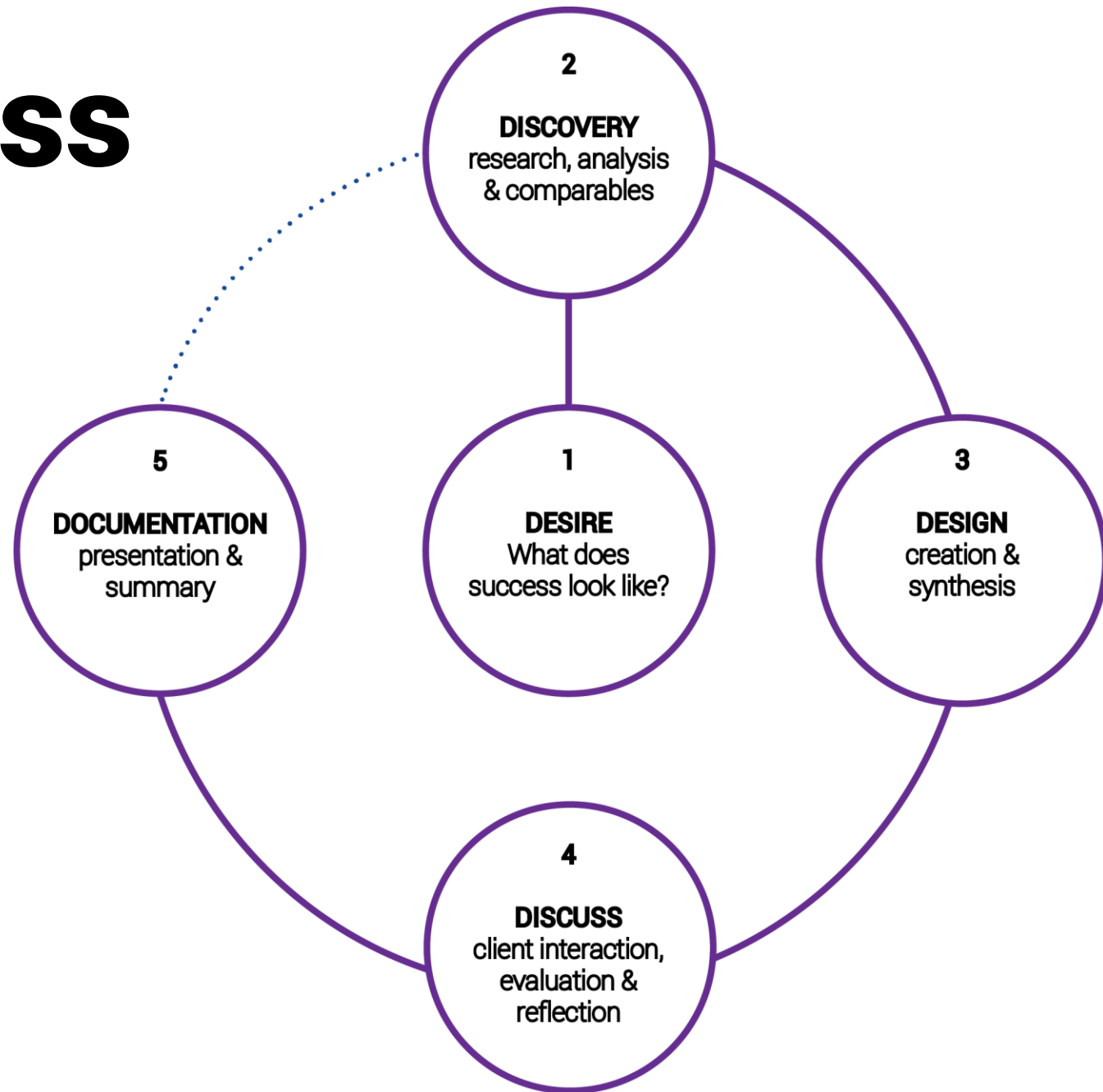


Boris Wong, PLA, ALSA
Catalyst Design Group
Landscape Architect
13 YOE



Wilfred Rodriguez
Baker Barrios Architects
Architectural Designer
6 YOE

Design Process



Desire

Your Thoughts on the Memorial's Mission'

Sanctuary, tranquility, healing, reflection, contemplation

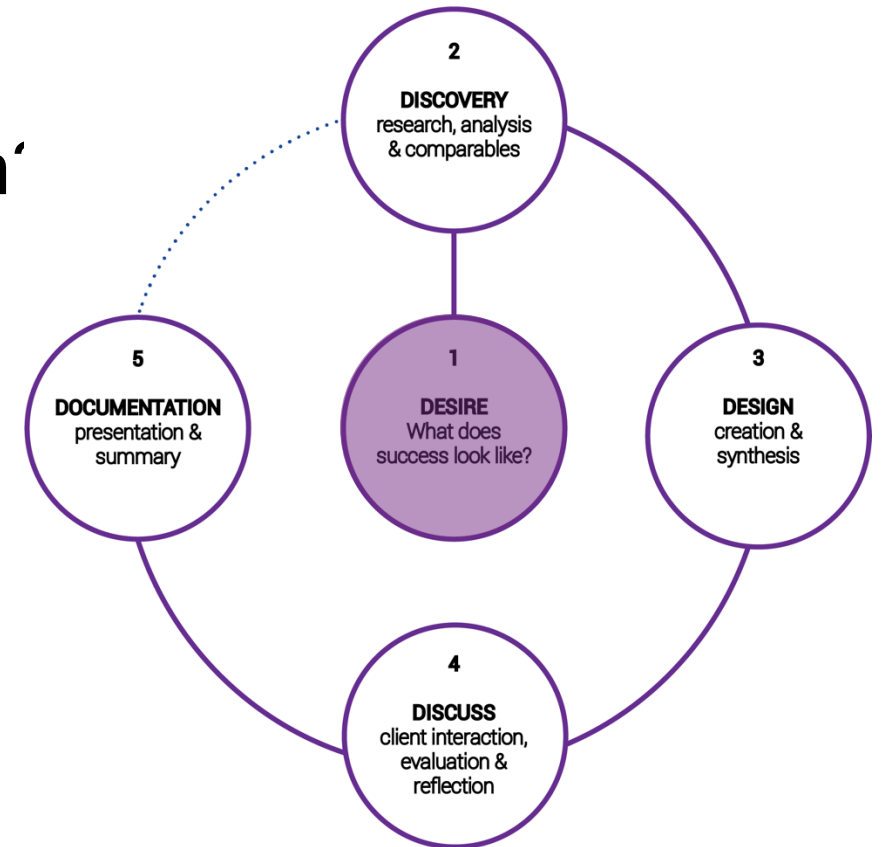
Remember the 49 whose lives were taken in a culturally and linguistically sensitive way, recognizing their identities from multiple backgrounds and sexual orientations (esp LGBTQIA+)

Educate on impact of Pulse on community and world

Love, hope, and acceptance

Resilience, moving forward through adversity

Voice for those affected (survivors, first responders) Honor and celebrate the lives that were brutally taken on June 12, 2016

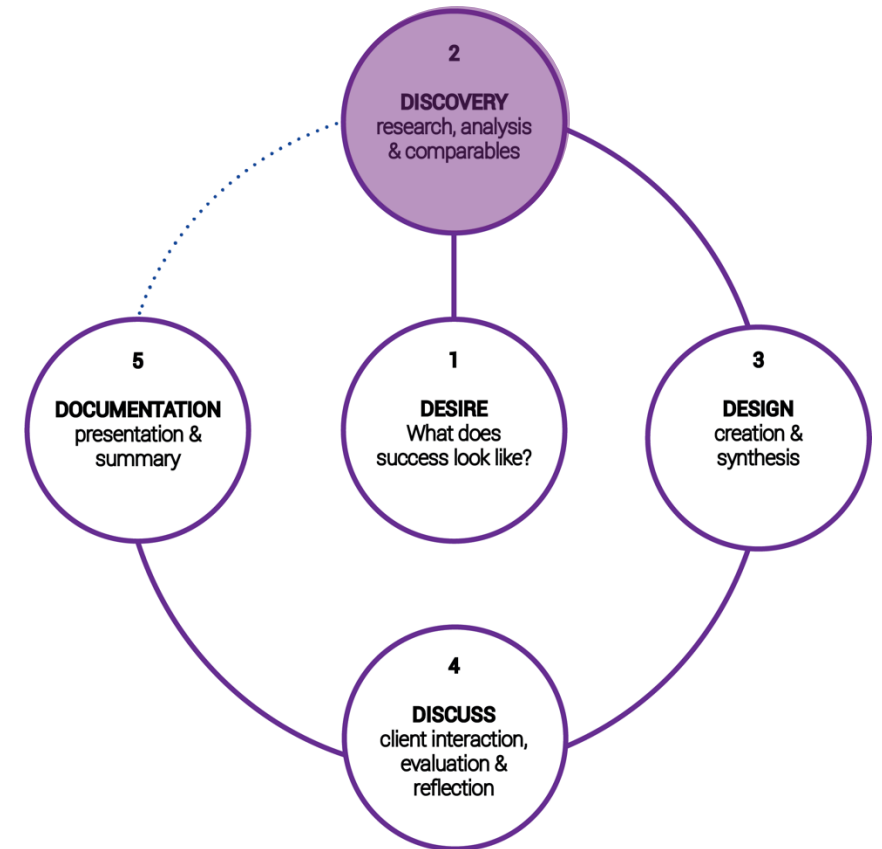


Discovery

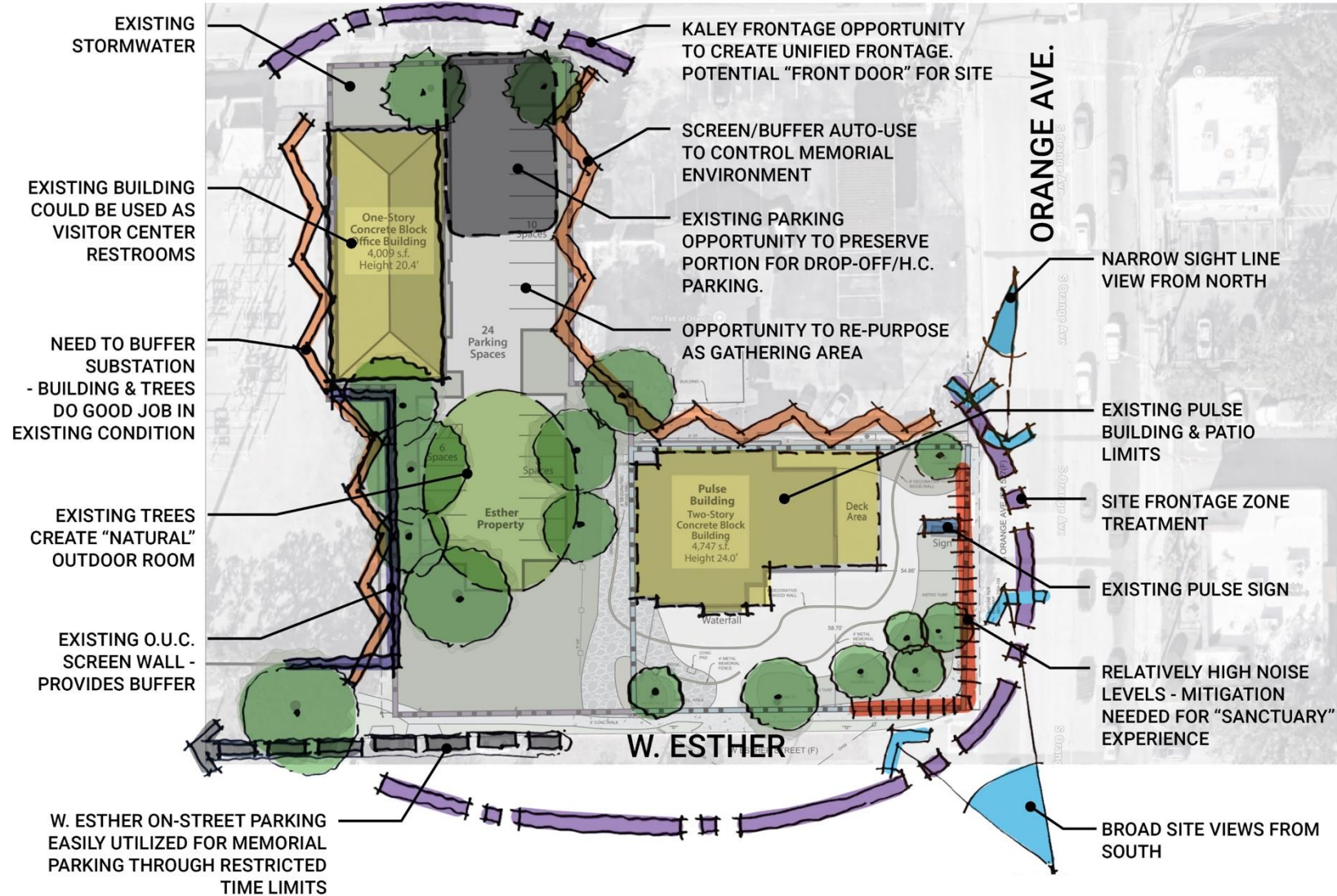
Site Analysis/Opportunities and constraints of the site, and where design elements can occur.

Examine potential **Design Elements**
Based on the Surveys that Committee members completed

Measure **Preferences** of committee related to design element images



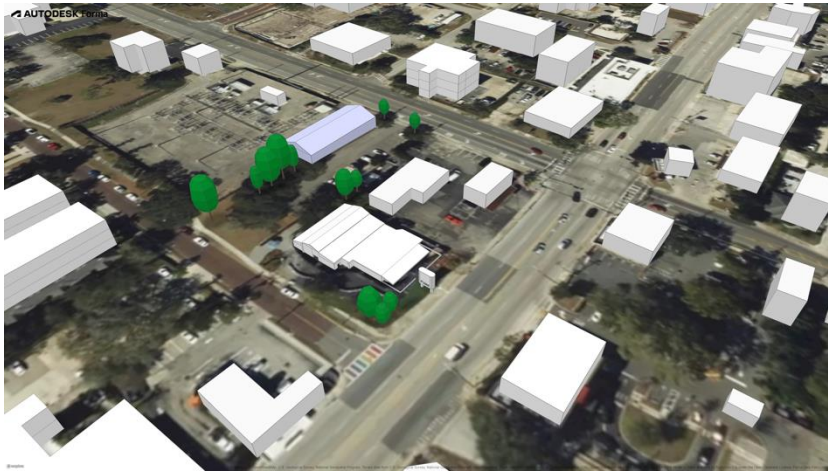
Site Analysis



Site Analysis

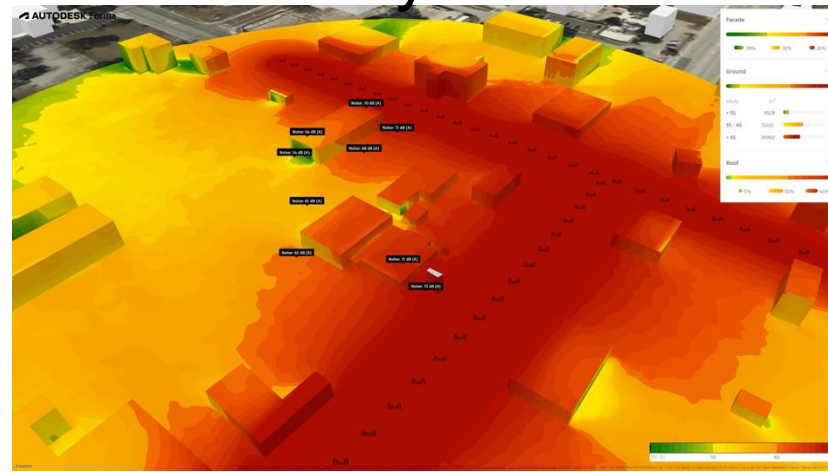
Site Model

1



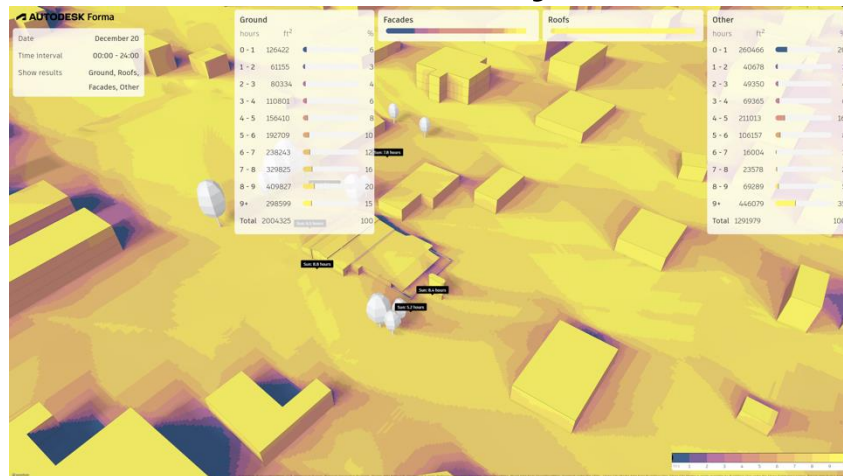
Noise Study

2



Sun Hours Study

3

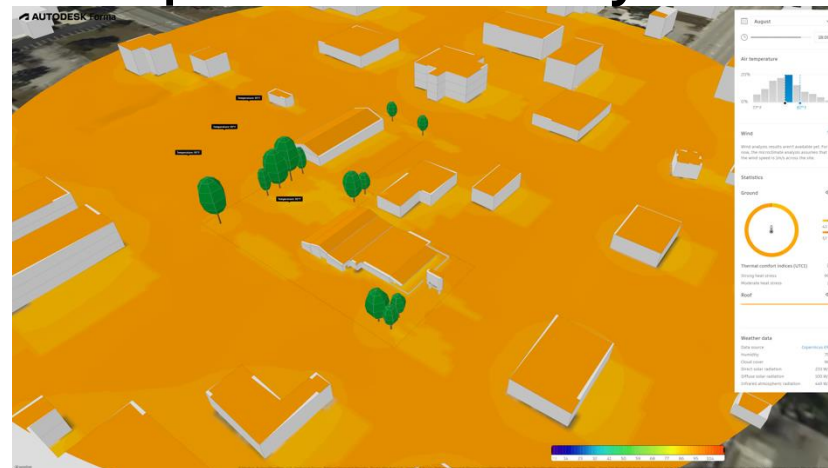


Ground	Hours	Area (sq ft)
0-1	126422	5
1-2	61155	4
2-3	80334	4
3-4	110801	6
4-5	156410	10
5-6	192709	15
6-7	238243	20
7-8	329825	30
8-9	409827	40
9+	298599	50
Total	2004325	100

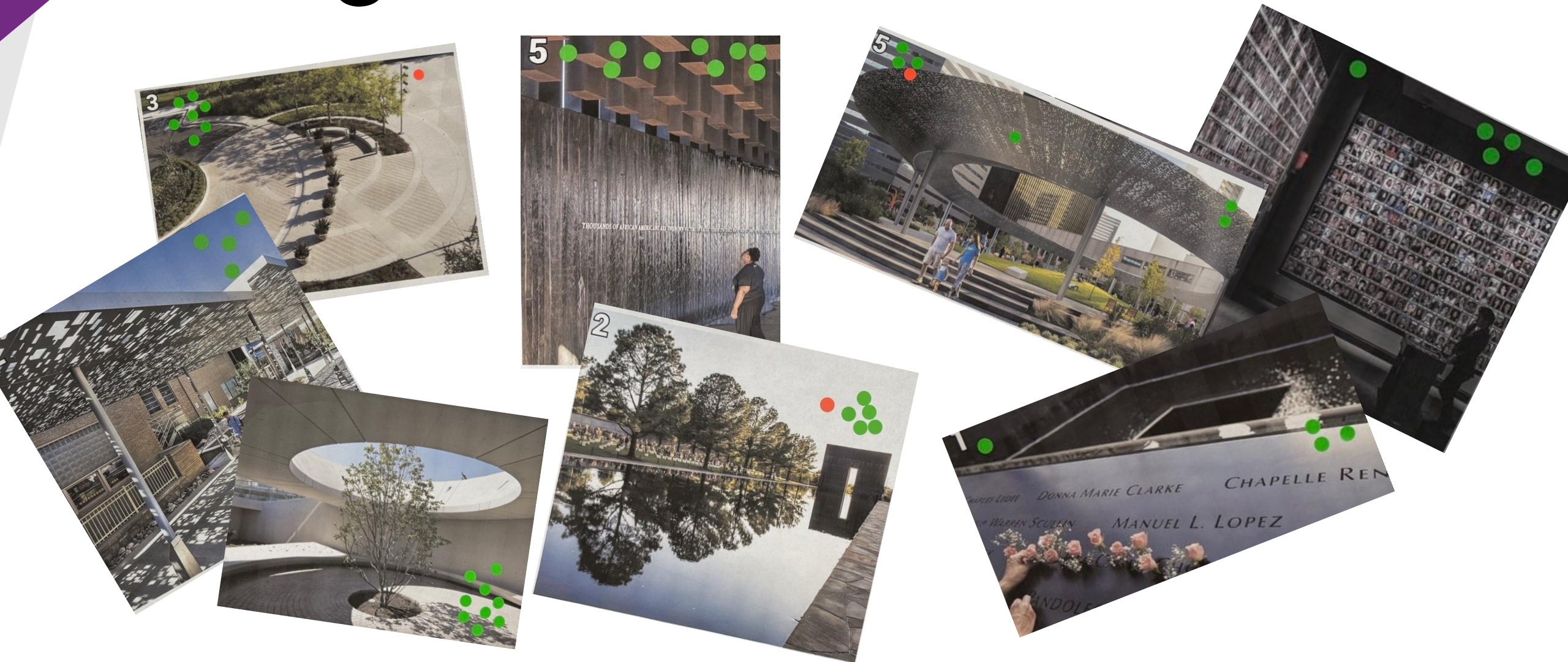
Other	Hours	Area (sq ft)
0-1	290466	20
1-2	40678	3
2-3	49350	4
3-4	99365	6
4-5	213113	10
5-6	156137	10
6-7	38004	1
7-8	23578	2
8-9	69289	5
9+	446079	35
Total	1291979	100

Temperature Study

4

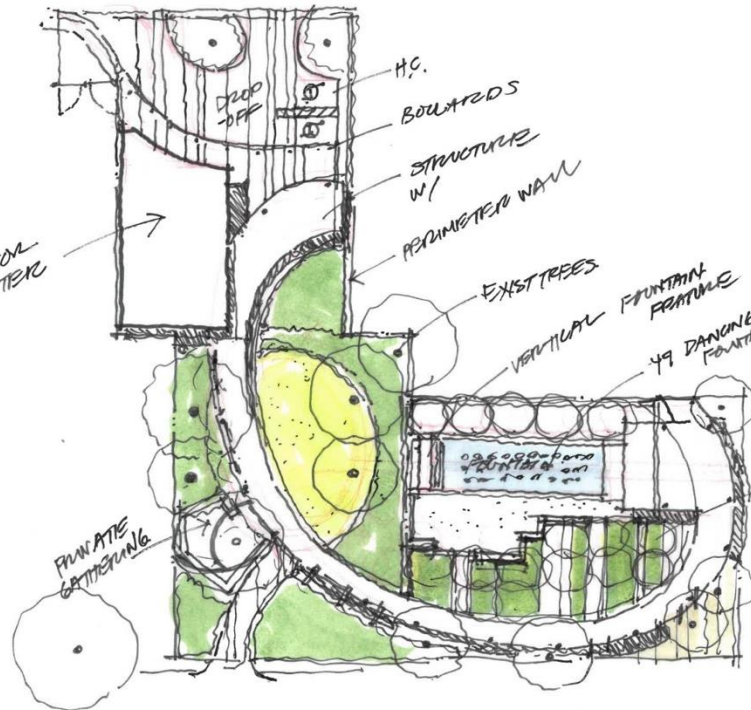


Design Element Preferences

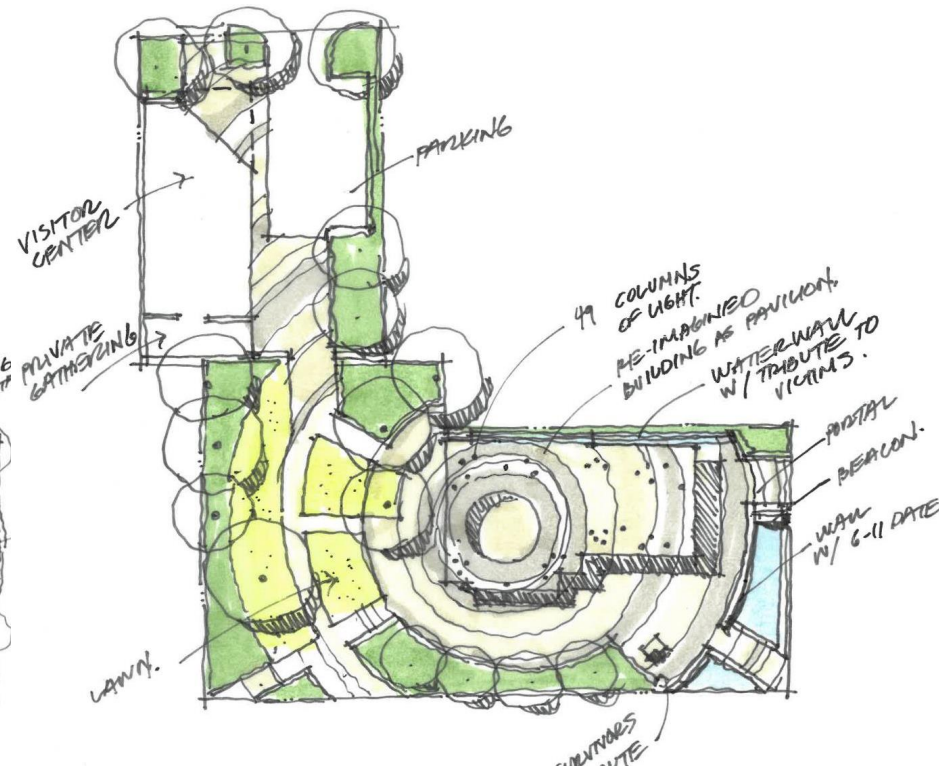


Site Organization Options

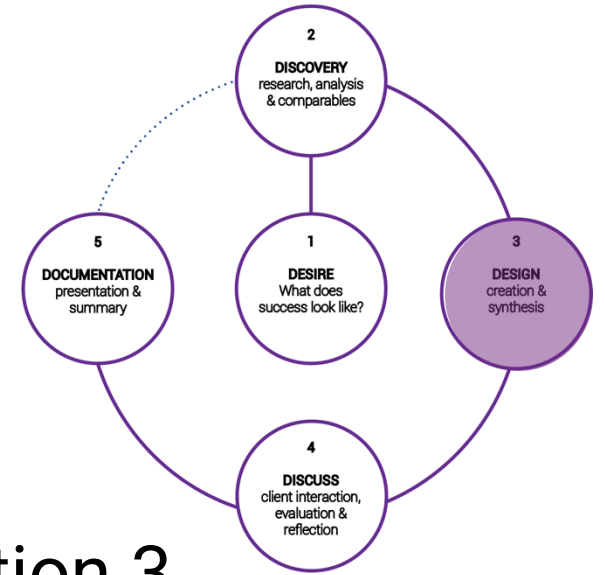
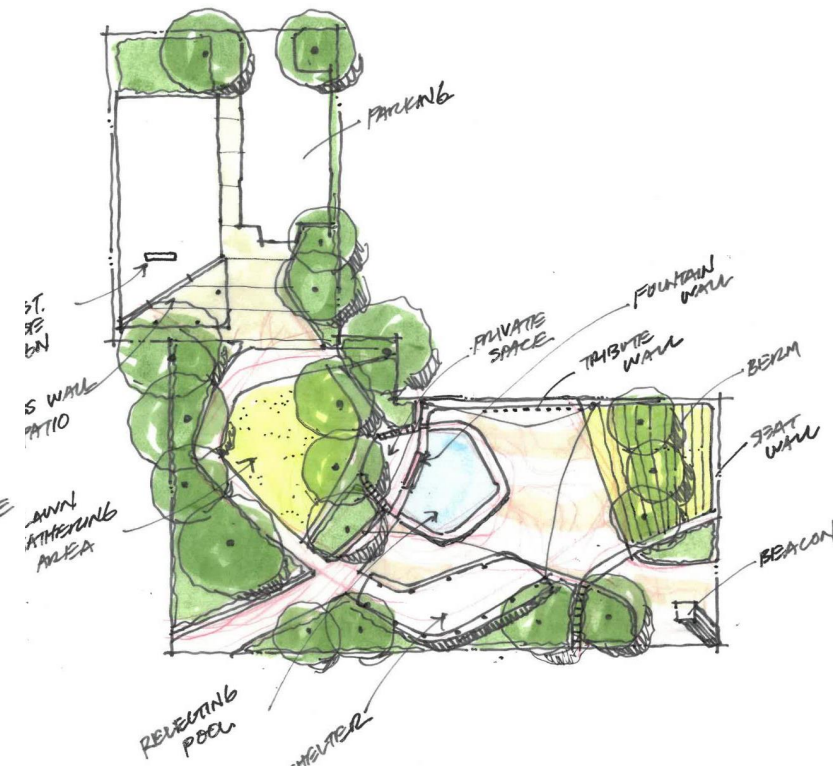
Option 1



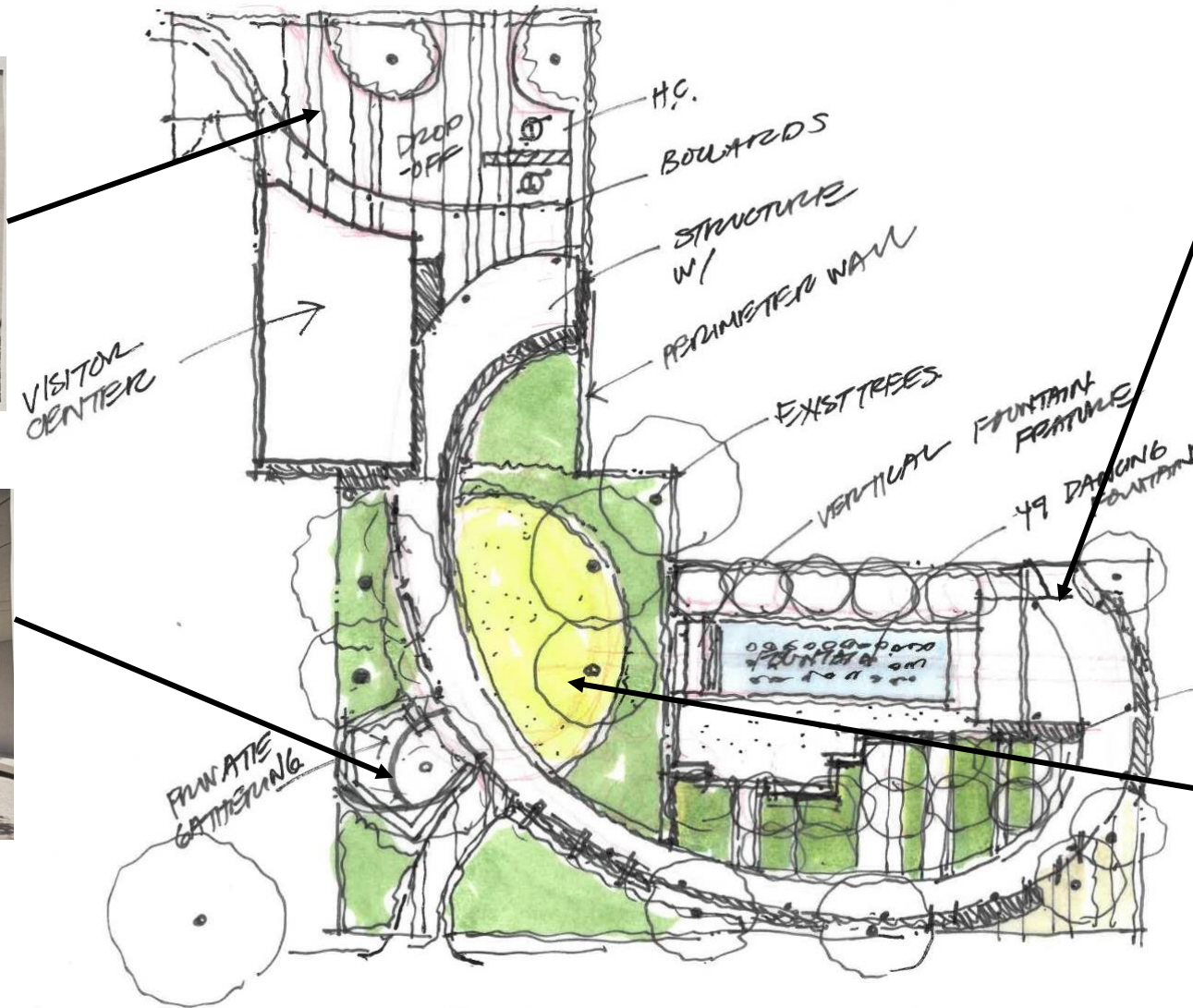
Option 2



Option 3



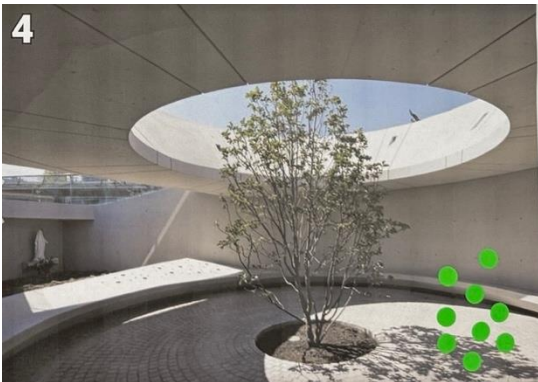
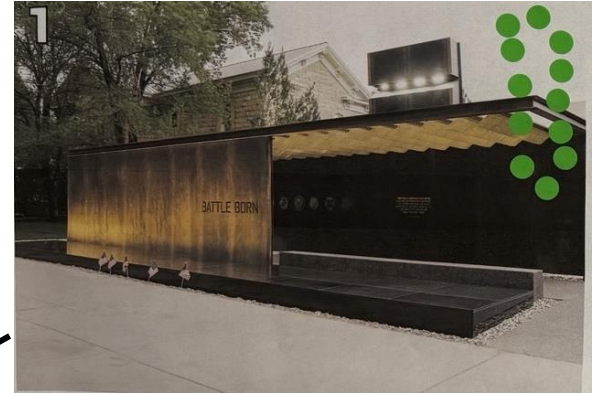
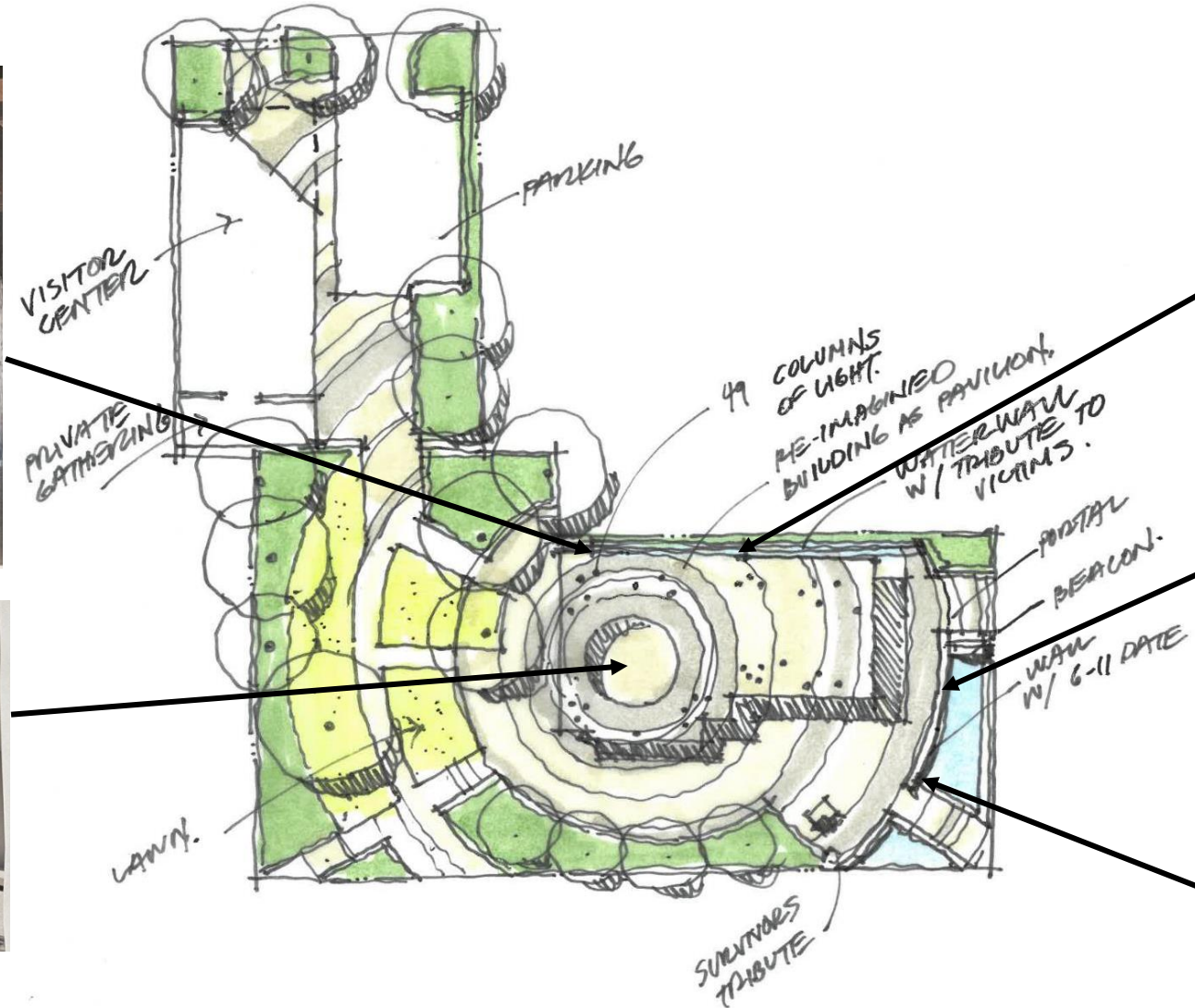
Site Organization Option 1



Option 1 Comments

- Ties everything together well
- colors in the ring or on the columns
- Option 1 seems more beautiful
- too grandiose for intimacy
- 4 (Private Gathering Area) speaks the most
- like that you kept the schematic outline of the building - Maybe outline the floor plan in rainbow mosaic
- I do like the 49 (columns)
- I don't think I would want names on those (Orange Avenue) columns
- fountains are too reminiscent of theme parks.
- like the placement of the privacy gathering
- could we include nationalities
- like the flag or something similar next to the name
- I do like the garden and the path

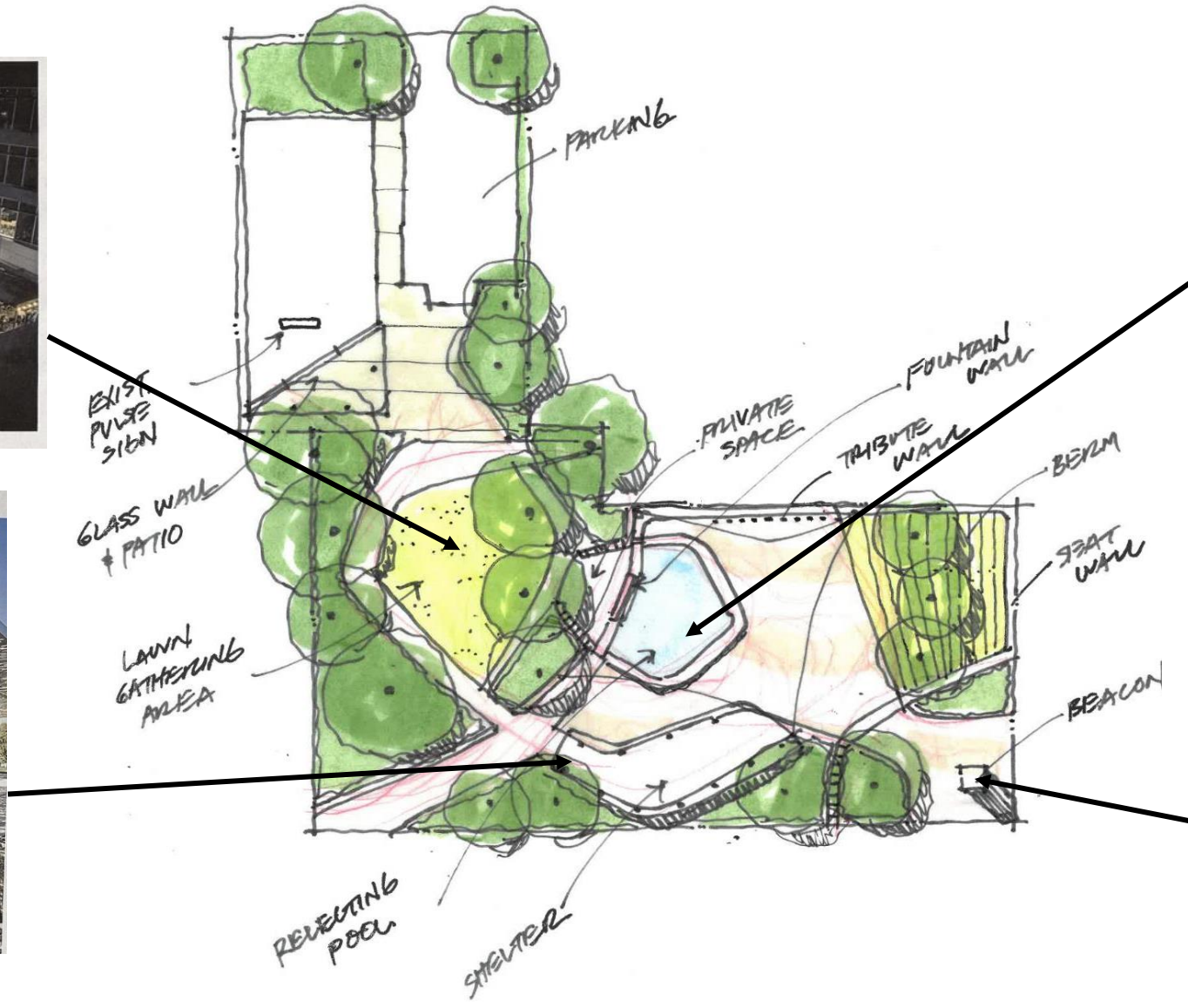
Site Organization Option 2



Option 2 Comments

- Dignified, more of a memorial feel, inspires hope, change
- I like the idea of the shoes
- Appreciate keeping the floorplan as the pavilion
- I did not like Option 1. I love Option 2
- As Latins we celebrate with music. If there is a funeral, or a celebration, there is music.
- Need a small monument for each one who was killed. for when family members go there, Could we place a capsule there, with objects given by the family members, under a plaque Bringing in something spiritual. I think that is missing
- The Pulse sign was something that stayed lit for years after the tragedy...I would love to see the sign stay.

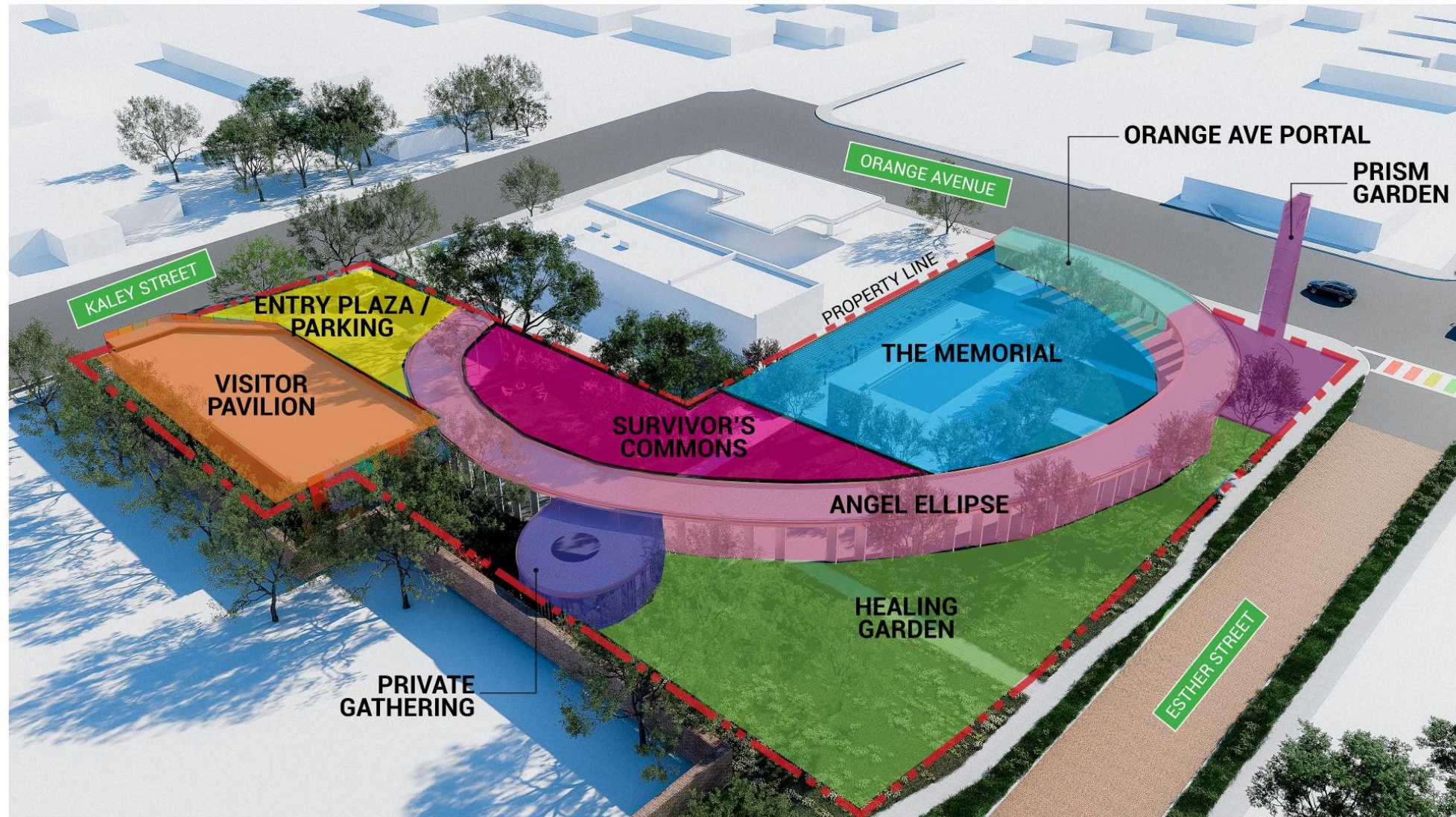
Site Organization Option 3



Option 3 Comments

- I do like the glass element
- Reminds me of a park (not in a good way).
- Would like to relocate the Pulse sign to that corner
- Regarding the objects from the families....it would take time to contact the families and get the objects. I love the ideas, but we would have start right now.
- What I like about this design is that it changes the landscape. I like that you know there is a memorial from a distance. It will become an icon of that street. All of the options should have that quality
- I like the art element
- The preservation of the building, there is so much symbolism, as you heard, it is sacred. If parts can be kept and covered, or sealed in, I would like that....I think it would be meaningful to keep them within the site

Concept Site Zones









Angel's Name

Angel's Name

Angel's Name

We All Those Who Just Wanted To Dance







06.12.16

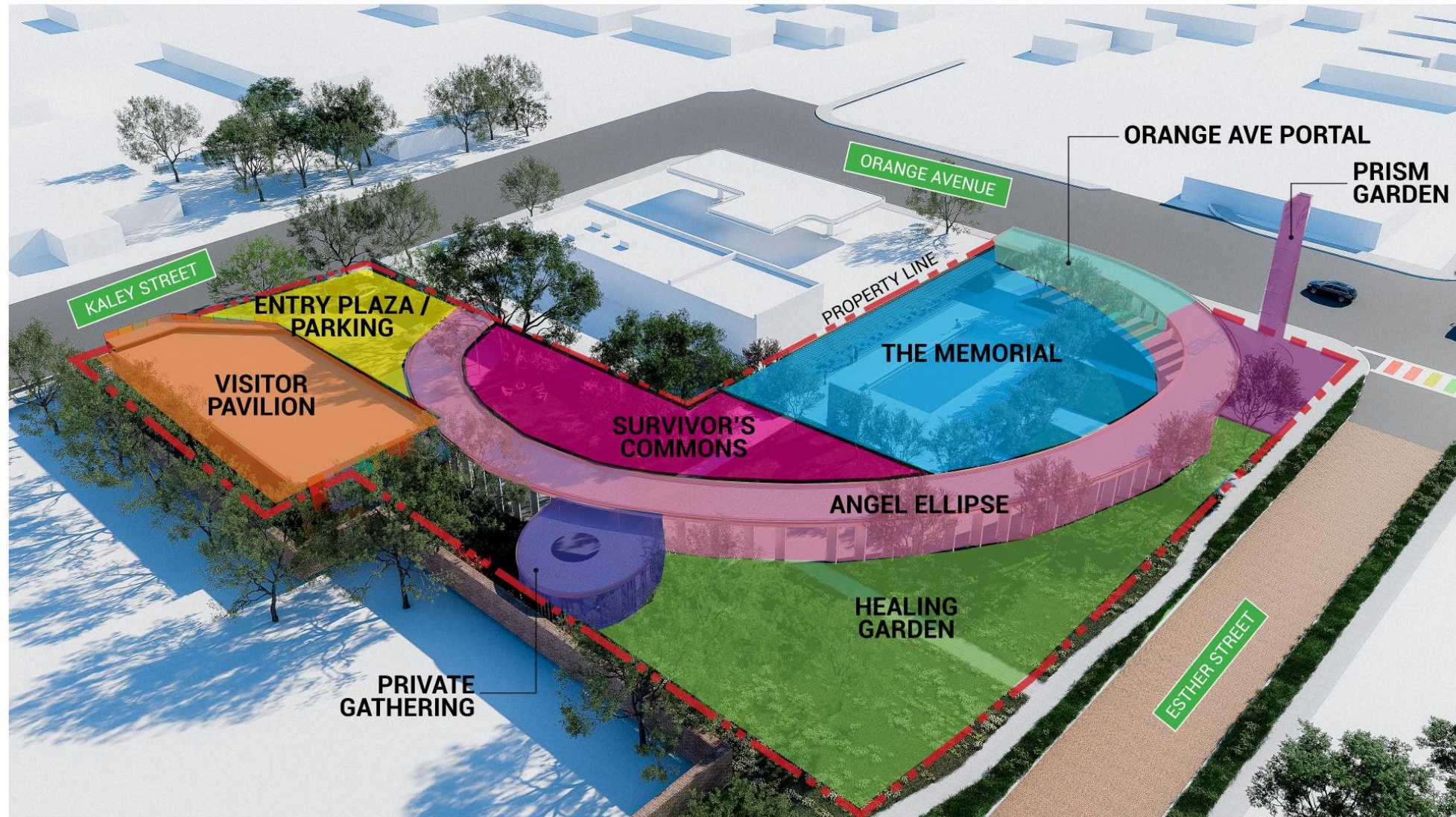
For All Those Who Just Wanted To D
R. Dani





06.12.16

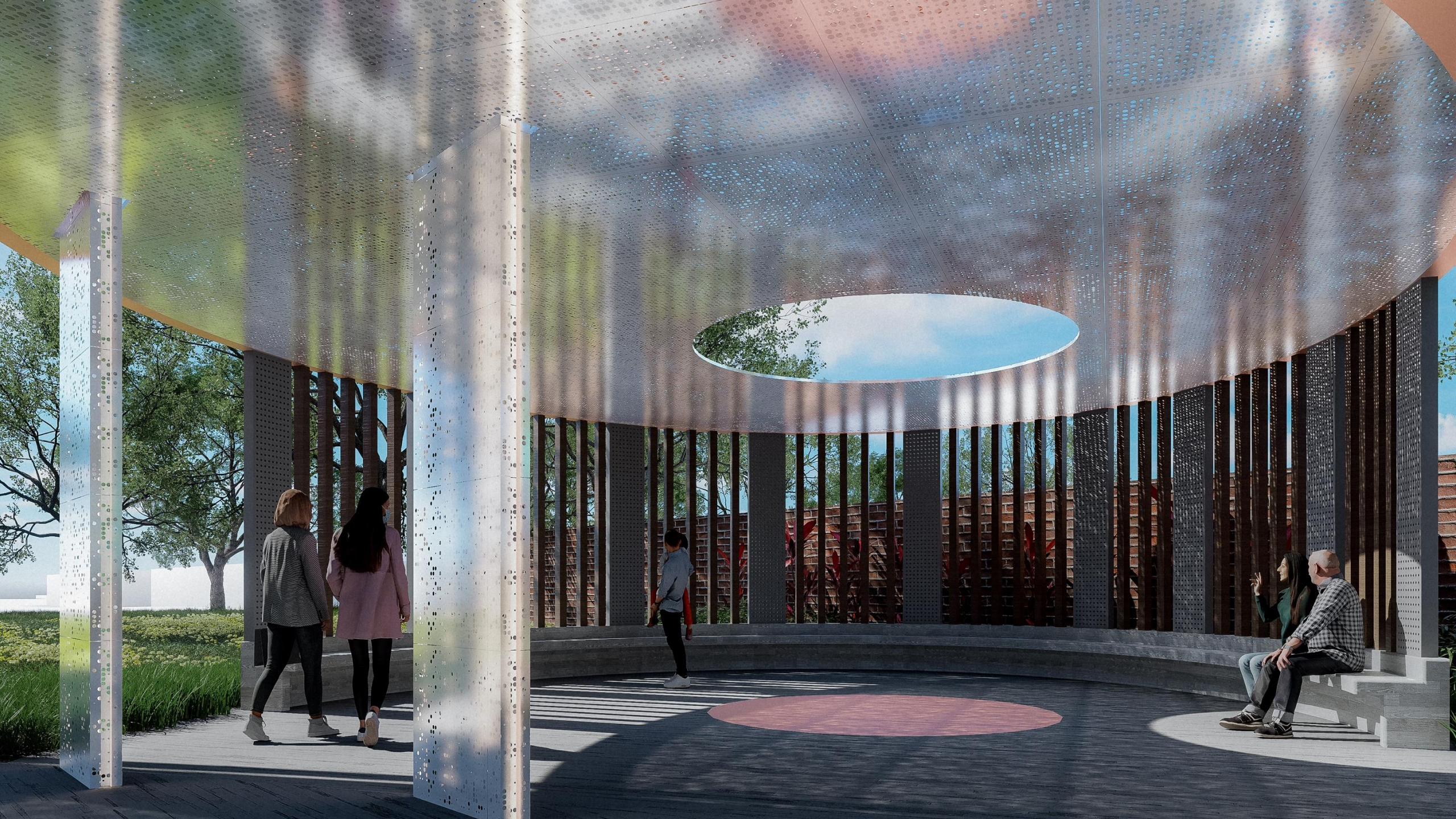
Concept Site Zones









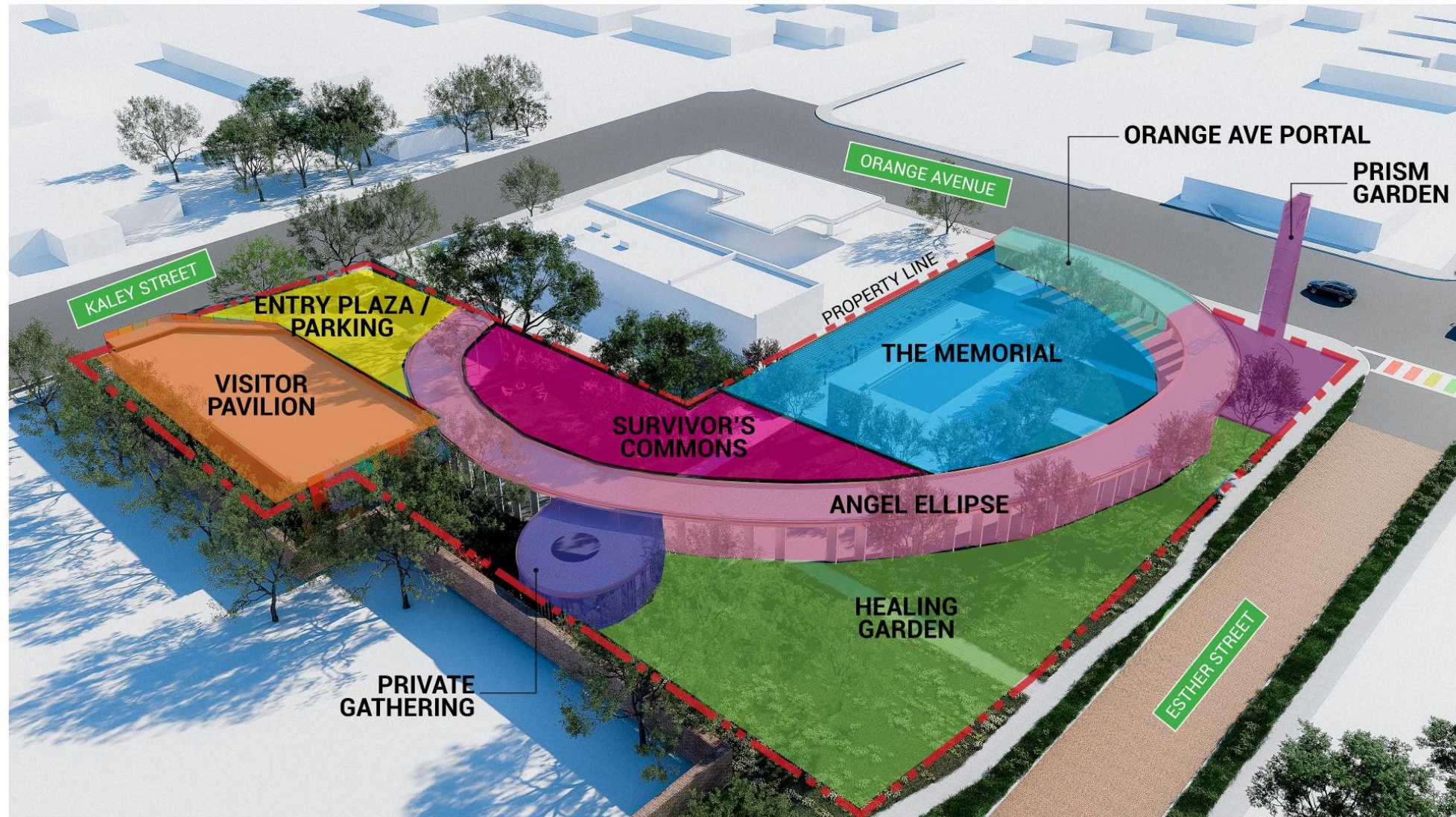








Concept Site Zones









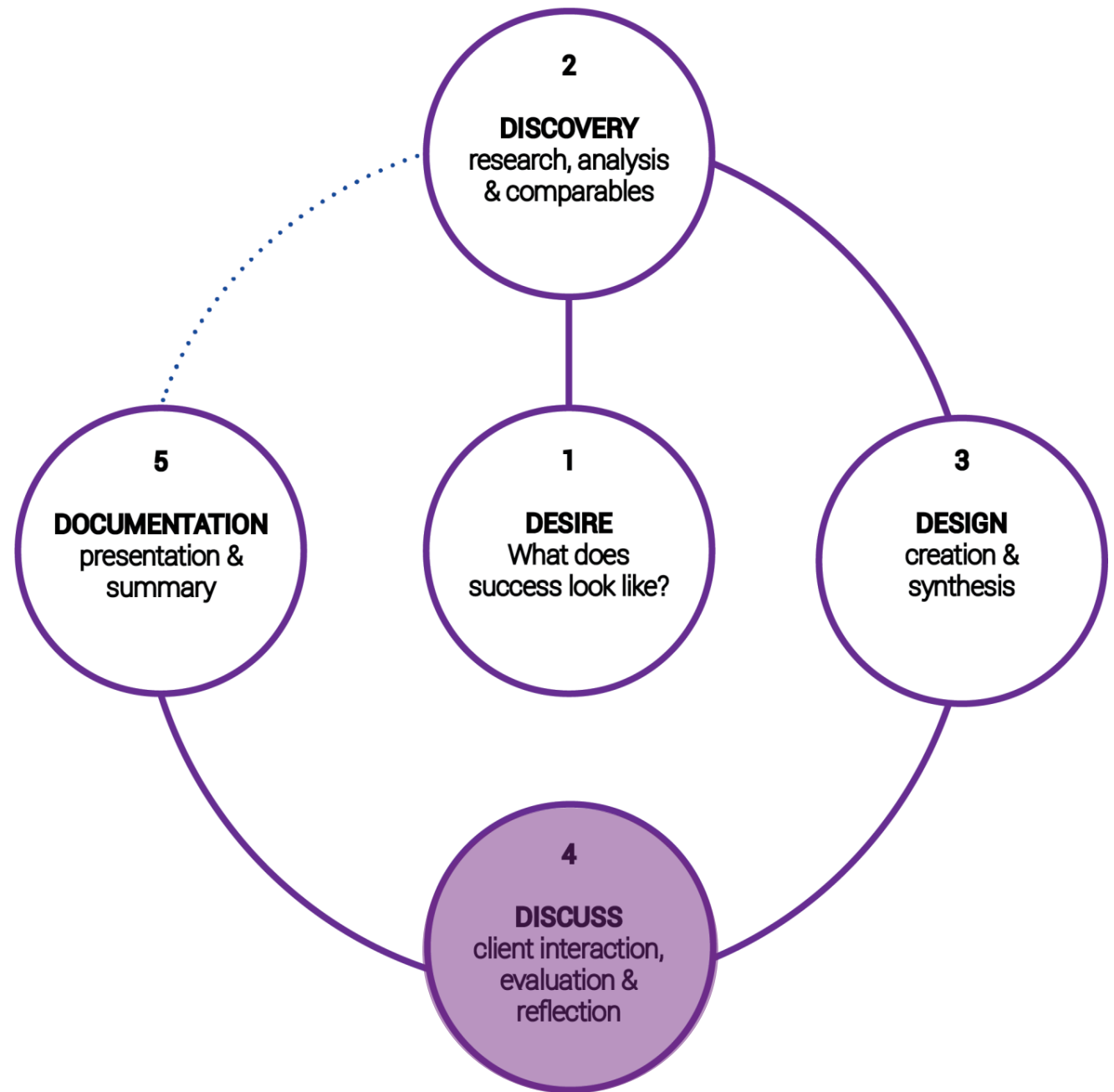


Design Concept Update



- 1 ENTRY PLAZA
- 2 PARKING
- 3 VISITOR PAVILION
- 4 ANGEL ELLIPSE
- 5 PRIVATE GATHERING
- 6 SURVIVOR'S COMMONS
- 7 SURVIVOR'S WALL
- 8 HEALING GARDEN
- 9 FOUNTAIN WALL
- 10 REFLECTION POOL
- 11 OBELISK
- 12 PRISM PLAZA
- 13 PARALLEL PARKING

Discussion





Next Steps

- ▶ Design Team will Refine Plan Based on Tonight's Discussion
- ▶ January – Present Final Concept
- ▶ Issue Design/Build Request for Proposal (RFP)





Pulse Memorial

Conceptual Design

Workshop

December 12, 2024

